

A  T&T GROUP Project



GRAND LIVING, NATURALLY.

*9*



# The Legacy



At AT&T, we shape living experiences that are thoughtful, future-ready, and deeply human. Every project we undertake is a reflection of our belief that design, technology, and lifestyle must come together to enhance everyday life in meaningful ways.

Over the years, we've redefined what modern living can feel like, blending intelligent planning with refined aesthetics and placing innovation at the heart of every space. Our communities are known for offering a lifestyle defined by balance, beauty, and lasting value. With ATLAS, we bring our philosophy to a new location, continuing our journey to build homes that elevate how people live, connect, and thrive.



# ATLAS

EVERY CITY HAS ITS LANDMARKS.  
ATLAS IS DESIGNED TO BE ONE.

ATLAS isn't simply about walls and towers. It's about creating a life that feels slower, lighter, and more complete. A place where elegance meets ease and where every detail whispers of class, comfort, and belonging. In the midst of the city's rush, ATLAS stands still - serene, stately, and unforgettable.

Life AT A





Wake up to open views of green from your balcony, where the noise of the city feels far away and your mornings begin in calm. At the heart of your community, a Mini Forest gives you a quiet escape — a place for your walks, your pauses, your unhurried evenings.

Inside, your home gives you more than walls. Wide layouts and airy rooms give you space to breathe, to grow, to truly live. Outdoors, tree-lined paths and gardens invite you to step out, stretch, and reconnect with what matters. Every detail of the architecture is crafted to make your home a place you cherish as much as you live in.

Life at ATLAS is where space, nature, and design come together to shape a lifestyle that feels rare and deeply personal to you.

THE

# Architecture



# al VISION



## THE ARCHITECTURE IS ROOTED IN BALANCE.

A form that respects tradition while holding hands with modernity. We wanted the connection between nature and human to build. Thus, plenty of green landscapes, shaded pathways, and thoughtful courtyards were not just additions, but essentials as spaces that restore calm and invite reflection in the middle of everyday life.

At ATLAS, every detail is deliberate. From the I-shaped towers, as a symbol, to an anchored timeless clock, the project quietly echoes tradition as the features speak the language of elegance. The layouts and design of the structure are visions, which were brought to life with balconies embracing green horizons, wide corridors and mindful entrances that let light and breeze move carefree through each home.

Graceful yet grounded, ATLAS rises as Raj Nagar Extension's architectural landmark.

VICTORI N

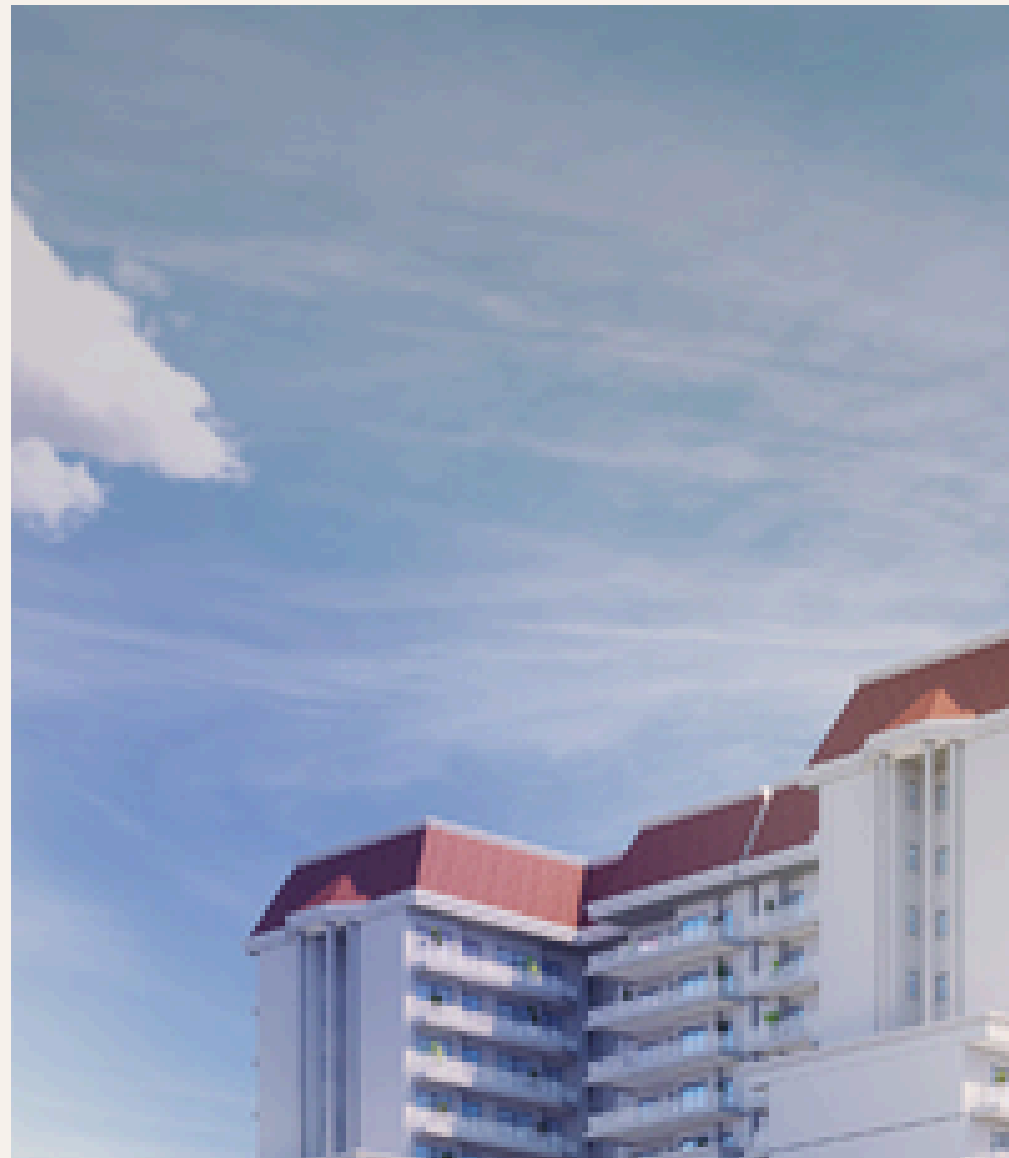
# Architect

## CRAFTED IN THE SPIRIT OF VICTORIAN GRANDEUR.

Inspired by the enduring beauty of Tudor and Victorian design, ATLAS reimagines classical architecture for contemporary living. Think steeply pitched roofs, slender vertical lines, and tall arched windows that invite light while framing the outdoors like art.

Ornamental balconies and fine detailing in stone and wrought iron lend every façade a sense of heritage and distinction. This is architecture with presence; romantic yet structured, intricate yet enduring.

At ATLAS, every curve, column, and cornice tells a story of timeless elegance, bringing the grace of a grand era into today's everyday moments.



*ure*

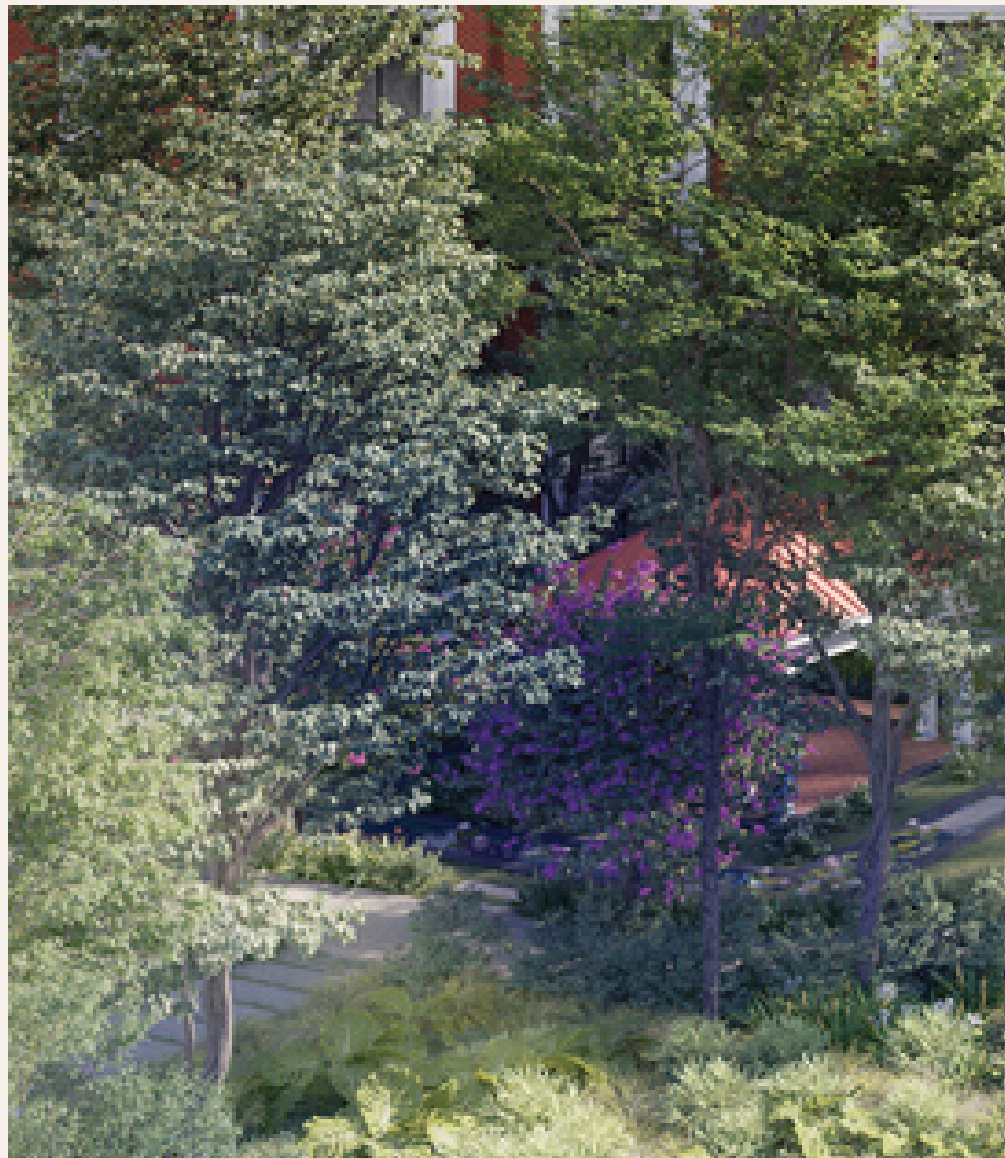


# THE MINI *Forest*

## NATURE'S OWN HAVEN.

A living sanctuary that soothes, restores, and inspires. At the heart of ATLAS stands its most distinctive green jewel: the Mini Forest. Spread across a dedicated patch of land, this lush haven brings the richness of nature into everyday life.

A place where children explore, seniors stroll, and families gather, the Mini Forest is a shared haven that nurtures wellbeing.





# Cloud

POOL





## ELEVATED LEISURE, INFINITE VIEWS.

Suspended in the skyline, the Cloud Pool redefines the art of swimming. Perched atop the crown of ATLAS, it merges leisure with breathtaking panoramas. Sparkling waters reflect the sky by day, while at night it becomes a serene escape under the glow of city lights.

Sleek edges, elegant decking, and welcoming lounge spaces make it more than a pool. It is a destination in itself, where relaxation rises above the ordinary and every dip feels like floating on the horizon.

At the Cloud Pool, water meets sky and everyday leisure transforms into timeless indulgence.

# Zero

## ON-GROUND TRAFFIC

### FREEDOM TO ROAM, SAFETY TO BREATHE.

At ATLAS, life flows without interruption. With all vehicles thoughtfully diverted below ground, the entire surface is left open for people, not traffic. Imagine strolling across wide walkways, children running freely, and neighbours gathering without the hum of engines or the worry of speeding cars.

This car-free ground creates more than convenience, it creates peace of mind. Fresh air, safer spaces, and uninterrupted views bring a rare sense of openness that redefines community living.

Here, mornings begin with unhurried walks, evenings with children at play, and every step feels lighter in a world designed for people first.





## THE ATLAS COLLECTION



### 👑 Amphitheatre

An open-air stage for cultural evenings, community gatherings, and entertainment under the sky.



### 👑 Kids' Play Area

Safe, engaging play zones that spark joy and creativity for the youngest residents.



### 👑 Cricket Net

A dedicated space for practice and play, where young and old can enjoy the sport together.



### 👑 Party Lawn

A landscaped expanse ideal for celebrations, gatherings, and festive occasions.



### 👑 Multipurpose Court

A versatile arena for outdoor sports and recreation, bringing activity to everyday living.



### 👑 Skating Rink

Glide into fun with a dedicated skating rink for all ages.



### 👑 Reflecting Pool

A serene water feature designed to add calmness and visual beauty to the landscape.



### 👑 Club

A hub of indoor leisure with spaces designed for games, fitness, and community bonding.

## DIGITAL HOMES

### SMART LIVING, EVERY DAY

At ATLAS, every home is designed to respond to your lifestyle. Intelligent features simplify your routines, enhance safety, and bring the comfort of technology into every moment.

Smart living at ATLAS brings together safety, convenience, and control, creating homes that are not just modern but truly intelligent.





### SMART DOOR LOCK

Secure and keyless, with fingerprint and PIN access for effortless entry.



### SMART BATHROOM

Experience modern comfort with a sensor-enabled smart pot.



### AUTOMATED CURTAINS

Invite natural light in, effortlessly balanced with privacy.



### DIGITAL VISITOR SCREENING

See and speak to visitors instantly, keeping your home safe and connected.



### SMART LIGHTING CONTROLS

Motion-sensor lighting for the perfect ambience.

## LOCATION & CONNECTIVITY

Strategically placed in Raj Nagar Extension, ATLAS connects effortlessly to the key destinations of NCR. With swift access to Noida, Delhi, and Ghaziabad, residents enjoy both convenience and connectivity. The neighbourhood offers educational institutions, hospitals, and retail hubs within easy reach, making ATLAS practical as well as aspirational.

## AT THE CROSSROADS OF CONVENIENCE

Delhi–Meerut RRTS	02 MINS	Noida Sector 62	20 MINS
Hindon River Metro Station	5 MINS	Hindon Airport	25 MINS
Delhi–Meerut Expressway	10 MINS	Akshardham Temple	30 MINS



UP.RERA.IN/PROJECTS | UPRERAPRI900831  
Collection Account No.: 721705000516  
Launch Date: 8th Aug '25



ICICI Bank, Hall No. 3, Plot 1&2, Chander Nagar,  
Surya Nagar, Ghaziabad, 201011, Uttar Pradesh  
ICIC0007217

PROJECT IS FINANCED BY AND MORTGAGED TO  
**ADITYA BIRLA HOUSING FINANCE LTD.**

NOC from Aditya Birla Housing Finance Ltd. will be required before entering  
into any arrangement/agreement for sale of any unit/flat in the project.



Marketed By



Contact Us For Site Visit: 921 222 4545