

WAVE
City

PROMOTER'S RERA REG. NO.: UPRERAPRM5538
PROJECT'S RERA REG. NO.: UPRERAPRJ422981
RERA WEBSITE: WWW.UP-RERA.IN

Marketed By



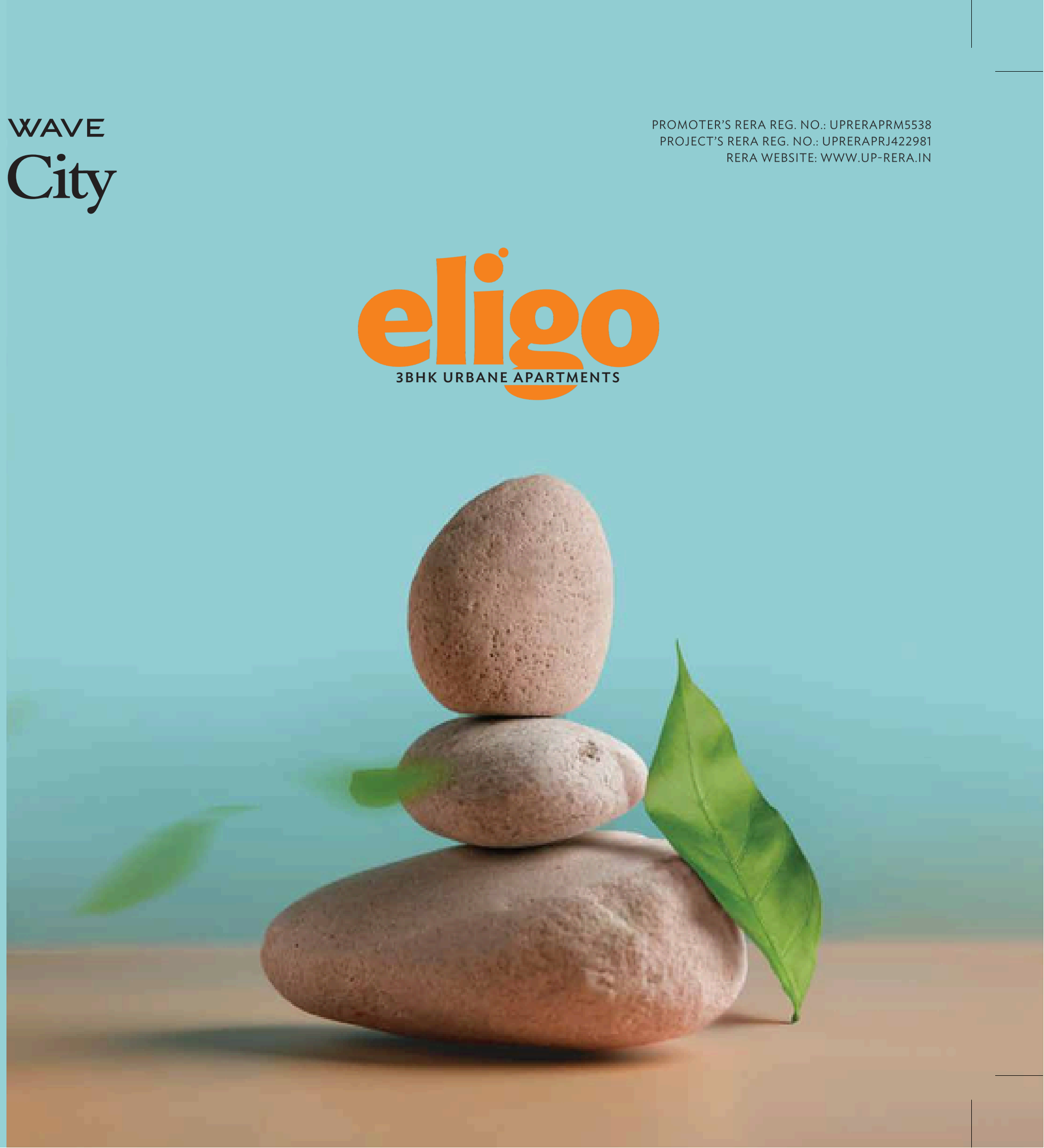
eligo
3BHK URBANE APARTMENTS

WAVE
City

Site Office: Eligo, Greenwood Enclave, Wave City, NH 24, Uttar Pradesh - 201015

Disclaimer: Renderings or shadow pattern is only artistic or instructional, it does not reflect the final form of the project.
Other charges & taxes will be applicable as per rules & norms. *T&C apply.

Contact Us For Free Site Visit: 921 222 4545





Artistic Image

eligo
3BHK URBANE APARTMENTS

LIVE LIFE IN
PERFECT BALANCE
3 BHK URBANE APARTMENTS
ARCHITECT PARTNER

PALAFIX



Artistic Image



Artistic Image

EXPERIENCE
THE EXTRAVAGANCE
OF TODAY'S
LIVING SPACES



LIVE LIFE IN PERFECT BALANCE

Strike the equilibrium of living with the luxuries of the modern world right in the lap of nature. Eligo 3 BHK Urbane Apartments enable you to live a perfectly balanced life with meticulously planned, sustainable infrastructure, ample amenities with unmatched views and equipped with world-class features for a blissful living.

PODIUM GREEN LIVING	RCC FRAMED STRUCTURE WITH 100% ALUMINIUM FORM WORK SYSTEM FOR ALL WALLS	4 APARTMENTS TO A CORE	DEDICATED ENTRANCE LOBBY
AIR-CONDITIONED APARTMENTS*	MODULAR KITCHEN*	7 FT. DEPTH LIVING ROOM BALCONY	DEDICATED CAR PARKING
uPVC SLIDING DOOR WITH WIRE MESH PROVISION	VIDEO DOOR PHONE	POWER BACK-UP	WELL-VENTILATED ROOMS
ADJOINING 6.5 ACRES PARK	BANG ON 57 M WIDE ROAD	2 MIN. FROM CANAL WALK	& LOTS MORE...

Disclaimer:*The price mentioned as aforesaid constitutes the basic sales price of the apartment only and fixtures and fittings like Air-conditioner, modular kitchen etc shall be chargeable separately.



Artistic Image



Artistic Image



Artistic Image

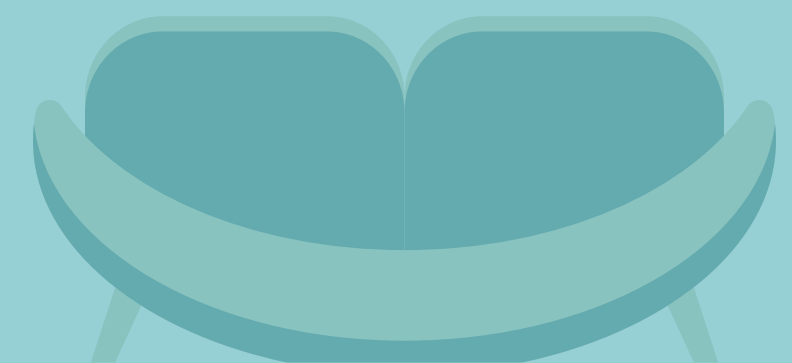
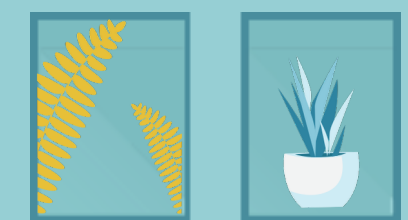
PERFECT BALANCE
OF COMFORT &
CONVENIENCE





Artistic Image

**INDULGE IN
THE LUXURY OF
MODERN
LIVING SPACES**





PODIUM GREEN LIVING

- ▶ SAFE ENVIRONMENT FOR CHILDREN TO PLAY AROUND
- ▶ QUIET & SERENE ENVIRONMENT FOR REFRESHING MORNING & EVENING WALKS
- ▶ VEHICLE-FREE ZONE

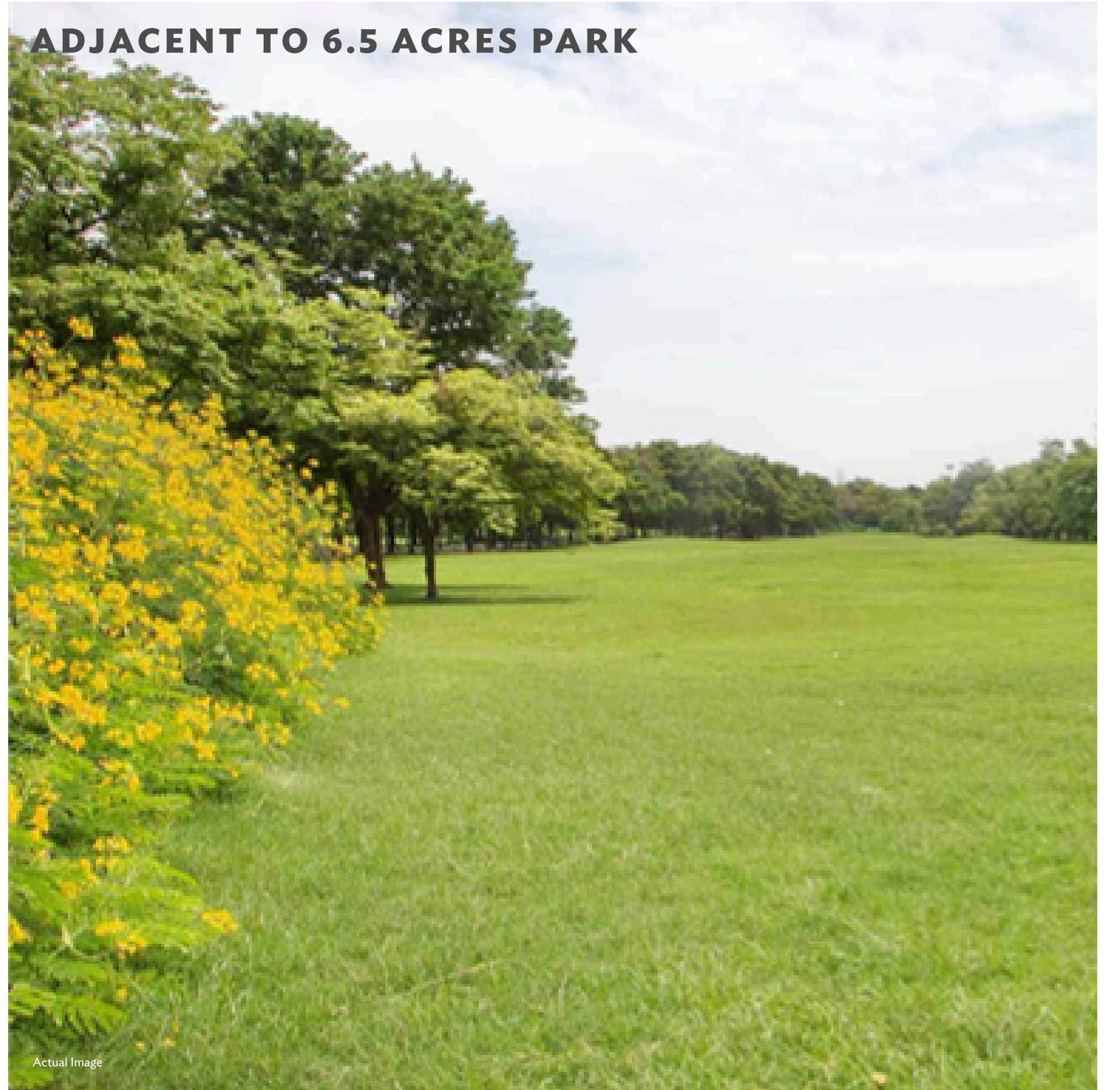


GAZEBO



Artistic Image

ADJACENT TO 6.5 ACRES PARK



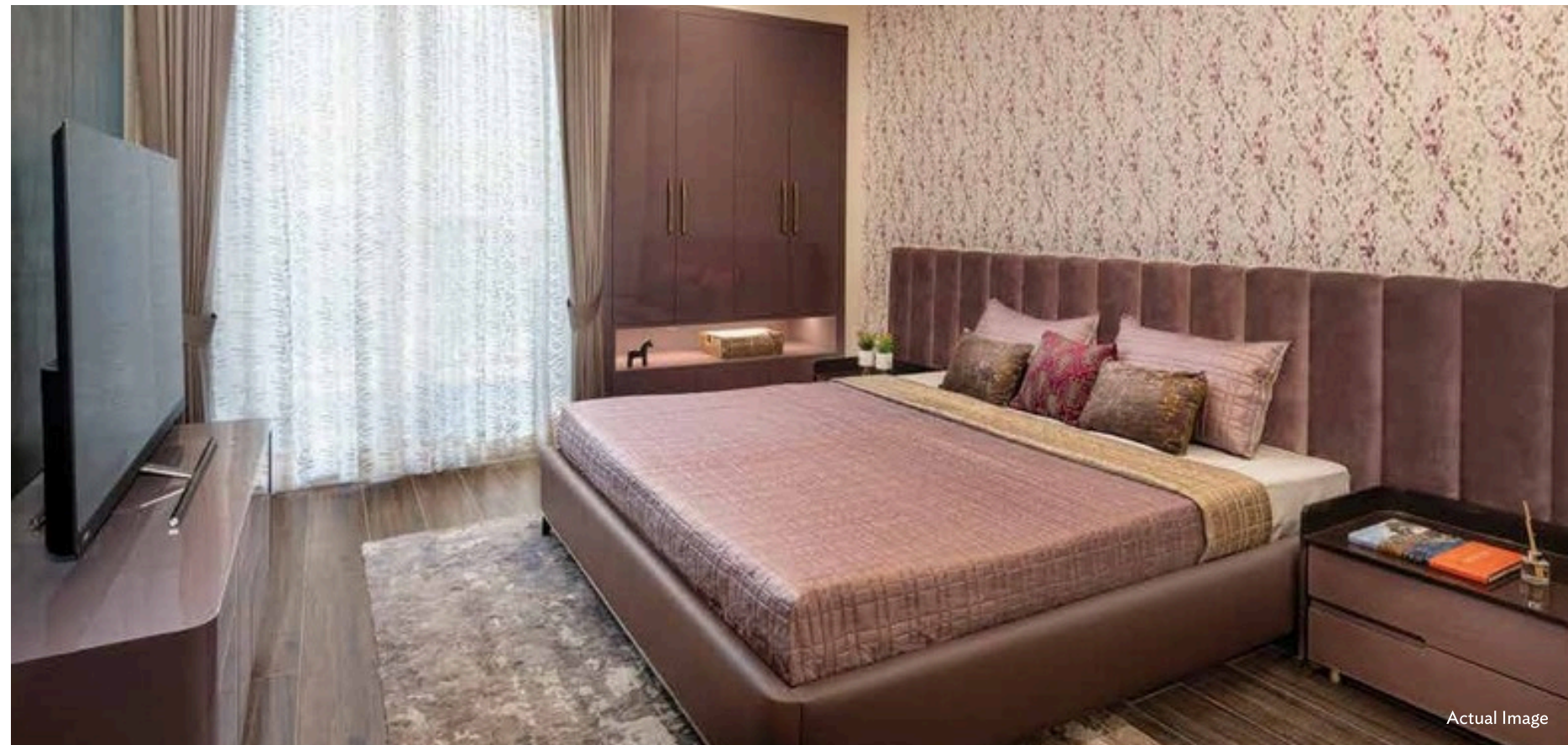
Actual Image



Artistic Image

**INDULGE IN
THE LUXURY OF
MODERN
LIVING SPACES**





GET INTO YOUR COMFORT ZONE WITH WELL-VENTILATED BEDROOMS

- ▶ 8' HIGH EXTERNAL GLAZED DOORS
- ▶ ERGONOMICALLY DESIGNED LAYOUT
- ▶ AIR-CONDITIONED ROOMS



SUCCESSFUL COLLABORATIONS STUNNING ARCHITECTURE

A multi-disciplinary firm founded by architect and urban planner, Felino "Jun" A. Palafox Jr. in 1989, Palafox Architecture has carried out more than 1,700 projects in 40 countries. The firm has more than 100 full-time staff of professionals and 100 consultants have expertise and experience in various fields of discipline such as architecture, urban planning, environmental planning, urban design, engineering, interior design, economics, real estate, business management, communications management, policy, as well as from specialised fields such as transportation planning, tourism, urban analytics, and climate change assessments, among many others.



Palafox Architecture was the first Filipino firm cited in the Top 500, Top 300, Top 200 architectural firms, and the first Filipino and ASEAN firm in the top 100 cited by the World Architecture Magazine based in London. The firm was the first to get ISO-certified in architecture, urban planning, landscape architecture, interior design, and among the first firms to be ISO-certified in engineering and project management.

ARCHITECT PARTNER: PALAFOX



Rockwell Center, Philippines



King Abdullah Financial District, Saudi Arabia



Landmark Cebu Corporate Center, Philippines

MASTER PLAN

LEGEND:

- TOWER-F TOWER-
- G TOWER-H
- ENTRY/EXIT
- PODIUM GREEN
-



ISOMETRIC VIEW TYPICAL UNIT



Carpet Area: 93.50 Sq. M.
Balcony: 16.80 Sq. M.
Saleable Area: 135.00 Sq. M. / 1453 Sq. Ft.

UNIT PLAN TYPICAL UNIT



Carpet Area: 93.50 Sq. M.
Balcony: 16.80 Sq. M.
Saleable Area: 135.00 Sq. M. / 1453 Sq. Ft.

ISOMETRIC VIEW CORNER UNIT



Carpet Area: 93.50 Sq. M.
Balcony: 25.60 Sq. M.
Saleable Area: 139.80 Sq. M. / 1505 Sq. Ft.

UNIT PLAN CORNER UNIT



Carpet Area: 93.50 Sq. M.
Balcony: 25.60 Sq. M.
Saleable Area: 139.80 Sq. M. / 1505 Sq. Ft.



Artistic Image

SPECIFICATIONS

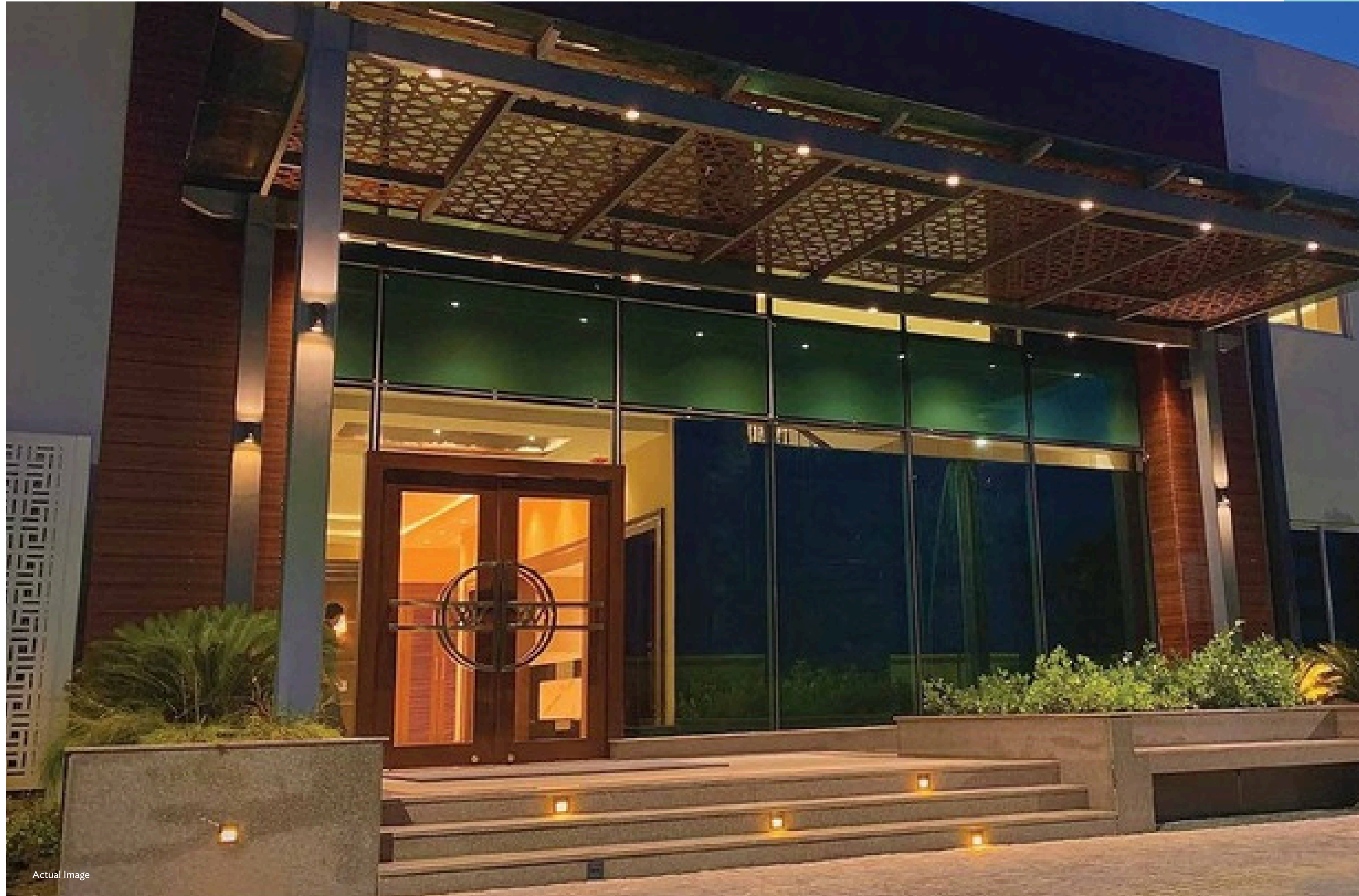
DESCRIPTION	3 BHK APARTMENTS
COMMON AREA	
Lift Lobby Flooring	Indian Granite
Lift Fascia Cladding	Indian Granite
Staircase Tread and Risers	Indian Granite
Staircase Railing	MS Railing
Lift lobby and Staircase Wall and Ceiling Finishes	POP Punning with Acrylic Emulsion Paint
Stilt Floor Finish	Tremix Flooring
Stilt Wall Finish	Acrylic Emulsion
Stilt Ceiling Finish	Acrylic Emulsion
Stilt Reception Area and Security Area	Granite Flooring, Wall and Ceiling Finish with Acrylic Emulsion
LIVING/DINING	
Wall	POP Punning with Acrylic Emulsion Paint
Floor	Vitrified Tile
Skirting	100 mm Skirting Matching with the Floor Tile
Ceiling	POP Punning with Acrylic Emulsion Paint
Internal Door	Factory Made Laminated Flush Door with Frame
Internal Door Hardware Fittings	Mortise Lever Handle, Cylindrical Lock and Other Standard Door Fittings (*Dorset or Equivalent)
Main Door	Factory Made Laminated Flush Door with Frame
Main Door Hardware Fittings	Mortise Lever Handle, Cylindrical Lock and Other Standard Door Fittings (*Dorset or Equivalent) Video Door Phone (*Alba or Equivalent)
External Door / Window	uPVC Glazed Door / Window
Air Conditioning	Split AC-3 Star Standard Make
Ceiling Fan	Havells or Equivalent
Electrical Points	Modular Electrical Fittings, Crabtree or Equivalent
MASTER BEDROOM	
Wall	POP Punning with Acrylic Emulsion Paint
Skirting	100 mm Skirting Matching with the Floor Tile
Floor	Vitrified Tile
Ceiling	POP Punning with Acrylic Emulsion Paint
Internal Door	Factory Made Laminated Flush Door with Frame
Internal Door Hardware Fittings	Mortise Lever Handle, Cylindrical Lock and Other Standard Door Fittings (*Dorset or Equivalent)
External Door / Window	uPVC Glazed Door / Window
Air Conditioning	Split AC-3 Star Standard Make
Wardrobe	Wardrobe with Prelaminated PB and Hettich or Equivalent Hardware Fitting
Ceiling Fan	Havells or Equivalent
Electrical Points	Modular Electrical Fittings, Crabtree or Equivalent

SPECIFICATIONS

DESCRIPTION	3 BHK APARTMENTS
OTHER BEDROOM (S)	
Wall	POP Punning with Acrylic Emulsion Paint
Skirting	100 mm Skirting Matching with the Floor Tile
Floor	Vitrified Tile
Ceiling	POP Punning with Acrylic Emulsion Paint
Internal Door	Factory Made Laminated Flush Door with Frame
Internal Door Hardware Fittings	Mortise Lever Handle, Cylindrical Lock and Other Standard Door Fittings (*Dorset or Equivalent)
External Door / Window	uPVC Glazed Door / Window
Air Conditioning	Split AC-3 Star Standard Make
Wardrobe	Wardrobe with Prelaminated PB and Hettich or Equivalent Hardware Fitting
Ceiling Fan	Havells or Equivalent
Electrical Points	Modular Electrical Fittings, Crabtree or Equivalent
KITCHEN	
Wall	Ceramic Tile upto 2' from Counter top + POP Punning with Acrylic Emulsion Paint on Remaining Wall
Floor	Vitrified Tile
Skirting	100 mm Skirting Matching with the Floor Tile
Ceiling	POP Punning with Acrylic Emulsion Paint
External Door / Window	uPVC Glazed Door / Window
Counter Top	Indian Granite Fixed on Modular Frame
Modular Kitchen	Modular Kitchen with Prelaminated PB and Hettich or Equivalent Hardware Fitting
Sink with Drain Board	Nirala or Equivalent
CP Fittings	Grohe or Equivalent
Exhaust Fan- 250mm	Havells or Equivalent
Electrical Points	Modular Electrical Fittings, Crabtree or Equivalent
MASTER TOILET	
Wall	Ceramic Tile upto 7' Height + Remaining Area POP Punning with Acrylic Emulsion Paint upto False Ceiling
Floor	Anti Skid Ceramic Tile
Ceiling	Calcium Silicate Board False Ceiling + Acrylic Emulsion
Internal Door	Factory Made Laminated Flush Door with Frame
Internal Door Hardware Fittings	Mortise Lever Handle, and Other Standard Door Fittings (*Dorset or Equivalent)
External Window	uPVC Glazed Window
Vanity Counter	Indian Granite Counter Fixed on Prelaminated PB Modular Frame
CP Fittings	Diverter, Shower, Anti Cockroach Drain Cover and Other CP Fittings - Grohe or Equivalent
Chinaware Fitting	Wall Hung WC, Concealed Cistern, Under Counter Wash Basin, American Standard or Equivalent
Electrical Points	Modular Electrical Fittings, Crabtree or Equivalent
Exhaust Fan and Geyser	Standard Make

SPECIFICATIONS

DESCRIPTION	3 BHK APARTMENTS
OTHER TOILETS	
Wall	Ceramic tile upto 7' Height + Remaining Area POP Punning with Acrylic Emulsion Paint upto False Ceiling
Floor	Anti Skid Ceramic Tile
Ceiling	Calcium Silicate Board False Ceiling + Acrylic Emulsion
Internal Door	Factory Made Laminated Flush door with Frame
Internal Door Hardware Fittings	Mortise Lever Handle, and Other Standard Door Fittings (*Dorset or Equivalent)
External Window	uPVC Glazed Window
Vanity Counter	Indian Granite Counter Fixed on Prelaminated PB Modular Frame
CP Fittings	Diverter, Shower, Anti Cockroach Drain Cover and Other CP Fittings - Grohe or Equivalent
Chinaware Fitting	Wall Hung WC, Concealed Cistern, Under Counter Wash Basin, Kohler or Equivalent
Electrical Points	Modular Electrical Fittings, Crabtree or Equivalent
Exhaust Fan and Geyser	Standard Make
BALCONY	
Flooring	Anti Skid Ceramic Tile
Railing	Railing as per Design
Wall	Exterior Grade Paint
Ceiling	Exterior Grade paint
EXTERIOR FINISH	
Exterior Wall	Exterior Grade Paint
All Balcony and Parapet Cill	Indian Granite
STRUCTURE AND SERVICES	
Electrical	3 KVA Power Back / Unit, Concealed Copper Wiring with Modular Plate Switches
Lifts	13 Pax, Stretcher Lift
Structure	Earthquake-resistant RCC Framed Structure, Structure Made with Aluminium Shuttering
Security	Multi-layered Security with Video Door Phone
Home Automation	Motion Sensor in Toilets



Actual Image

CLUB EXECUTIVE

Loosen up your stress in the exquisitely designed Club Executive, available for all the residents of projects located in plot no GH-8, Greenwood Enclave (Sector-5), which provides state-of-the-art amenities for a wide range of recreational activities. It serves as a hub for all kinds of fun activities one can desire, whether they involve spending time with family or making new friends.

It offers you a complete lifestyle experience, from working out in the state-of-the-art gym to drenching yourself in the lavish pool. Also featured are a restaurant, a multi-purpose room and a dedicated yoga space. Every Eligo resident will be pleased to have the elite Club Executive in their community and will value how it improves their way of life.



LOBBY

Actual Image



GYMNASIUM

Actual Image



KIDS PLAY AREA

Actual Image



Actual Image

SWIMMING POOL



Artistic Image

MEDIA ROOM



MULTI-PURPOSE HALL

Actual Image



Artistic Image

SMART FEATURES

Come home to a smart living at Eligo. From uninterrupted power and water supply to waste disposal system and Jio Fiber connectivity, Eligo promises an uber luxurious lifestyle that's at par with the world.

- ▶ Motion Light Sensors
- ▶ Solar Power
- ▶ Smart Energy Metering
- ▶ PNG Connection



Actual Image



Artistic Image

UNMATCHED LOCATION & SECURITY

Eligo has an enviable address inside Wave City, nestling next to NH24. Featuring thoughtfully designed wide roads and being close to social, educational and financial institutions, Eligo offers unrivalled peace of mind as a gated community.

- ▶ Video Door Phone
- ▶ Dedicated Entrance Lobby
- ▶ Point on Access control

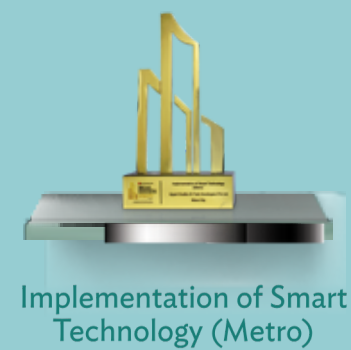
WAVE City

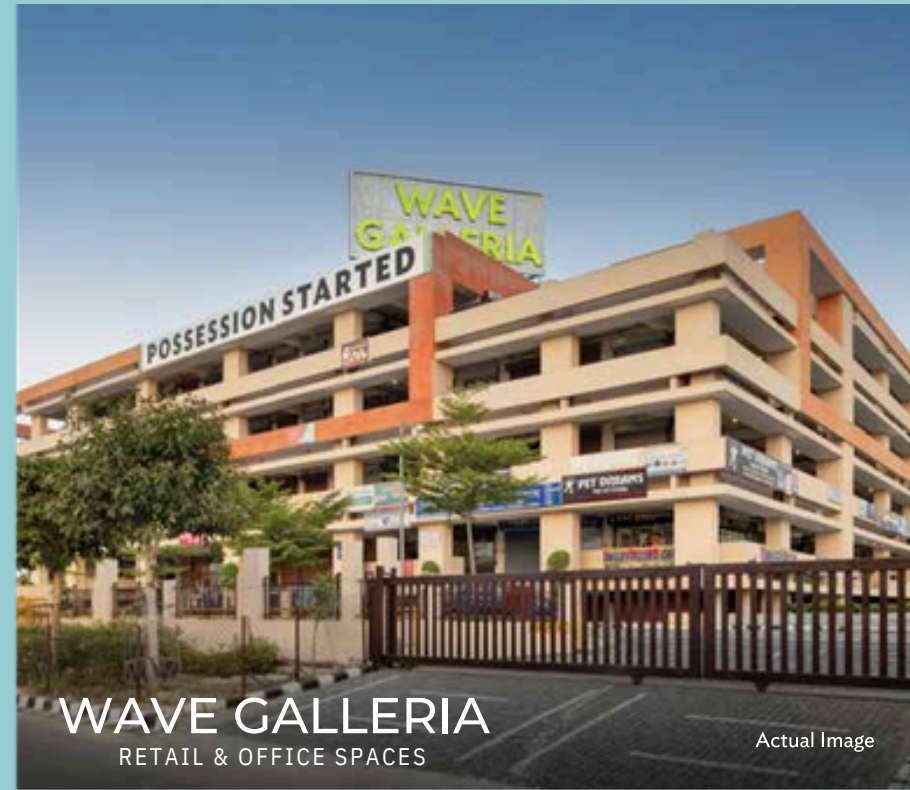
Wave City is a first-of-its-kind project that truly personifies the concept of creating a city that thinks for you, located adjacent to 14 lanes of National Highway- NH-24, Wave City is India's first operational Hi-tech smart city well known for its pinnacle living experience. Spanning over 4200 acres and India's largest Pre-Certified Platinum Rated Green township where 35 % of the area is dedicated to green and open spaces. Today, Wave City has handed over more than 11,000+ possessions letters to its residential and commercial unit holders where more than 4000+ families are already residing, and a total of 1 mn. plus sq. m. of the constructed area has been delivered till date. Along with this, the construction of more than 500+ plots has already commenced.

The entire ecosystem is seamlessly integrated in a way that it incorporates all the facilities of an urban and modern lifestyle like Golf Range, Indo- German Polyclinic, Medical Store, Freshly Yours, Taste of India- a multi-cuisine restaurant, EVOO Supermarket, Convenient Store, Sportzon, 6.5 acre Central park, Canal Walkway, ISKCON Temple and many more. Apart from this, Wave city has some well-known schools, colleges, and hospitals in its vicinity within a radius of 2 Km.

Being a Hi-Tech city, Wave City is also equipped with smart features like Central Command Centre, GPS-enabled intra-city transport facility, City-level Surveillance, Smart Electric Grid, Intelligent Transport Management System, Waste Management, Homeland Security Management, Weather Substation, Solid Waste Management, City Portal, Street Light Automation, Mobile app and Jio Fibre Optic for seamless connectivity. Wave City promotes smart and sustainable living for its residents.

Wave City offers a blend of innovative commercial and residential products, duly registered under RERA, which includes apartments (Eligo, Dream Homes, Wave Executive Floors and Swamanorath), independent floors (Wave Floors) and a commercial center (Wave Galleria). Wave City offers a low-density living, full of vigor and vitality which makes it a perfect place to enjoy a comfortable, convenient and uncluttered lifestyle.





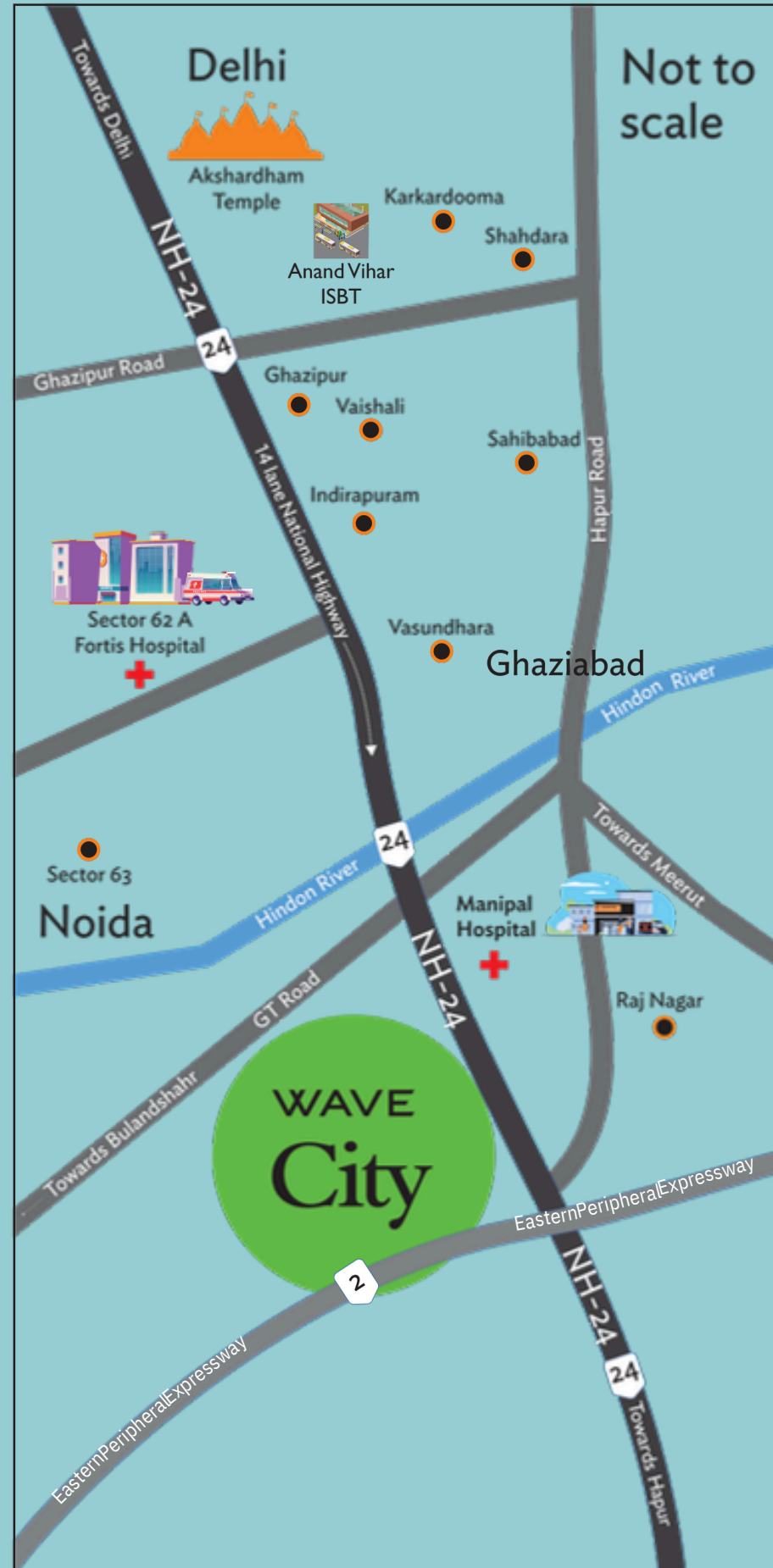
WAVE CITY HIGHLIGHTS

<p>India's first operational hi-tech smart city</p>	<p>14,000+ residential units sold</p>	<p>11,000+ possession letter handed over</p>	<p>15,000+ people residing</p>
<p>55 Park provide tranquil retreats</p>	<p>Wave Galleria - office & commercial space</p>	<p>The Taste of India - a multi cuisine restaurant & Freshly Yours - a daily convenience store</p>	<p>Indo-German Polyclinic & Medical Store nearby</p>
<p>E-RICKSAW facility within the city</p>	<p>Sportzon - world class sports complex</p>	<p>Canal Walkway - 3.5 km walkway of lush greenery</p>	<p>ISKCON Temple</p>

SMART FEATURES

<p>Central command centre</p>	<p>City level surveillance</p>	<p>Fibre optic connectivity</p>	<p>Connected through mobile app</p>
<p>Street light automation</p>	<p>Sewage treatment plant</p>	<p>Smart metering</p>	<p>Solid waste management</p>

LOCATION MAP



LOCATION HIGHLIGHTS



Located on 14 lane NH 24



30 minutes away from Akshardham Temple, Delhi



5 minutes from proposed metro station



6 minutes away from Eastern Peripheral Expressway



15 minutes from Noida Sector-62



15 minutes from Indirapuram, Ghaziabad

