



Wave Executive Floors

Stilt+5 Low-rise Apartments

RERA Promoter's Reg. No. UPRERAPRM5538
RERA Project Reg. No. UPRERAPRJ3989
Sanctioned Date & No.: 14.07.2014 & 64/ZONE-5/2013-14

WAVE
City

The city that thinks for you

Wave Executive Floors



Actual Image

Wave Executive Floors have been designed keeping in mind the global architectural trends. These stilt+5 low-rise apartments are enclosed within a gated community, ensuring privacy and safety. The project offers all the facilities and amenities of a premium development such as dedicated car parking and automatic elevators. Thoughtfully designed with technology and innovation, Wave Executive Floors are the ideal abode surrounded by greenery and serenity. With sizes ranging from 54.3 sq. m. to 67.76 sq. m., these 2 & 3 BHK apartments offer the luxury of choice with premium living experience.

WAVE EXECUTIVE FLOORS FEATURES

<p>Gated community</p>	<p>Actual Image</p>	<p>Elevators, power back-up & other public utilities</p>	<p>Artistic Image</p>
<p>Actual Image</p>	<p>Dedicated car parking</p>	<p>Artistic Image</p>	<p>Proposed shopping & other facilities</p>
<p>Adjacent to central park</p>	<p>Artistic Image</p>	<p>Clubhouse & swimming pool</p>	<p>Artistic Image</p>

Disclaimer: The photograph given in the brochure are only artistic impression and may not fully/ exactly match with the project specifications.

SPECIFICATIONS

DRAWING/DINING ROOM

Floor	: Vitrified tiles
External Door	: Polished/Painted wooden frame with moulded skin/flush door
Walls	: Oil bound distemper
Windows	: Powder coated/Anodized aluminium frame with glazing
Ceiling	: Oil bound distemper
Fixtures & Fittings	: Modular electric switches

MASTER BEDROOM

Floor	: Laminated wooden flooring
Internal Doors	: Polished/Painted wooden frame with moulded skin/flush door
Walls	: Oil bound distemper
Windows	: Powder coated/Anodized aluminium frame with glazing
Ceiling	: Oil bound distemper
Fixtures & Fittings	: Modular electric switches

OTHER BEDROOM

Floor	: Vitrified tiles
Internal Doors	: Polished/Painted wooden frame with moulded skin/flush door
Walls	: Oil bound distemper
Windows	: Powder coated/Anodized aluminium frame with glazing
Ceiling	: Oil bound distemper
Fixtures & Fittings	: Modular electric switches

TOILET (MASTER BEDROOM)

Floor	: Anti-skid ceramic tiles
Fixtures & Fittings	: Wall mounted WC with exposed cistern, over/under counter wash basin with granite counter, chrome plated fittings, modular switches
Walls	: Ceramic tiles up to 7 ft. h.
Ceiling	: Oil bound distemper
Ventilator	: Powder coated/Anodized aluminium frame with glazing

TOILET (OTHER BEDROOM)

Floor	: Anti- skid ceramic tiles
Fixtures & Fittings	: Wall mounted WC with exposed cistern, wall mounted wash basin, chrome plated fittings, modular switches
Walls	: Ceramic tiles upto 7 ft. h.
Ceiling	: Oil bound distemper
Ventilator	: Powder coated/Anodized aluminium frame with glazing

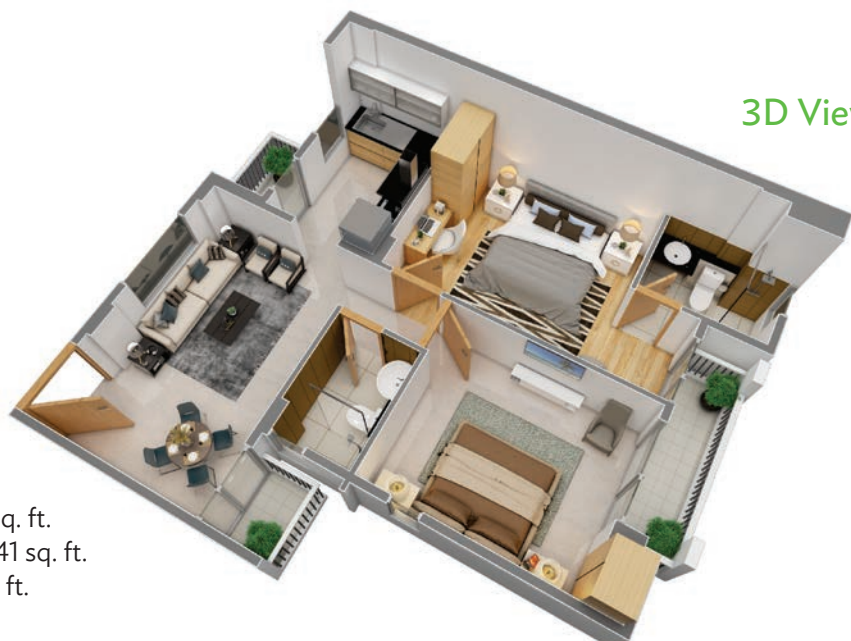
KITCHEN

Floor	: Vitrified tiles
Fixtures & Fittings	: Working platform with granite top with stainless steel sink, chrome plated fittings and modular switches, points for RO & Geyser
Walls	: Ceramic tiles up to 2 ft. h. above counter/OBD

BALCONY

Floor	: Anti-skid tiles
Railing	: Combination of enamel painted MS railing with masonry

Wave Executive Floors - 2 BHK typical floor plan



Unit: 2 BHK

Carpet Area: 54.30 sq. m./ 584.48 sq. ft.

Total Unit Area: 66.00 sq. m./ 710.41 sq. ft.

Saleable Area: 83.61 sq. m./ 900 sq. ft.

(1 sq. m. = 10.764 sq. ft.)

Wave Executive Floors - 3 BHK typical floor plan



Unit: 3 BHK

Carpet Area: 67.76 sq. m./ 729.36 sq. ft.

Total Unit Area: 82.00 sq. m./ 882.64 sq. ft.

Saleable Area: 104.88 sq. m./ 1129 sq. ft.

(1 sq. m. = 10.764 sq. ft.)

Wave City - A first of its kind project that truly personifies the concept of creating a city that thinks for you. Spread over an impressive landscape adjacent to National Highway 24, Wave City is one of India's largest Hi-Tech City based on "Hi-Tech City Concept". Undertaken and promoted by "Uppal Chadha Hi-Tech Developers Pvt. Ltd.", the project focuses on creating an entirely new way of living with contemporary infrastructure and facilities. The city promises to offer a nurturing environment to its residents and is being developed to provide an entirely new living experience that will be unparalleled.

This mixed-use destination focuses on quality construction, keeping in mind the contemporary design and new-age architecture. With the luxury of green open spaces and modern infrastructure designs, the city ensures a pampered, secure and luxurious lifestyle to its inhabitants.

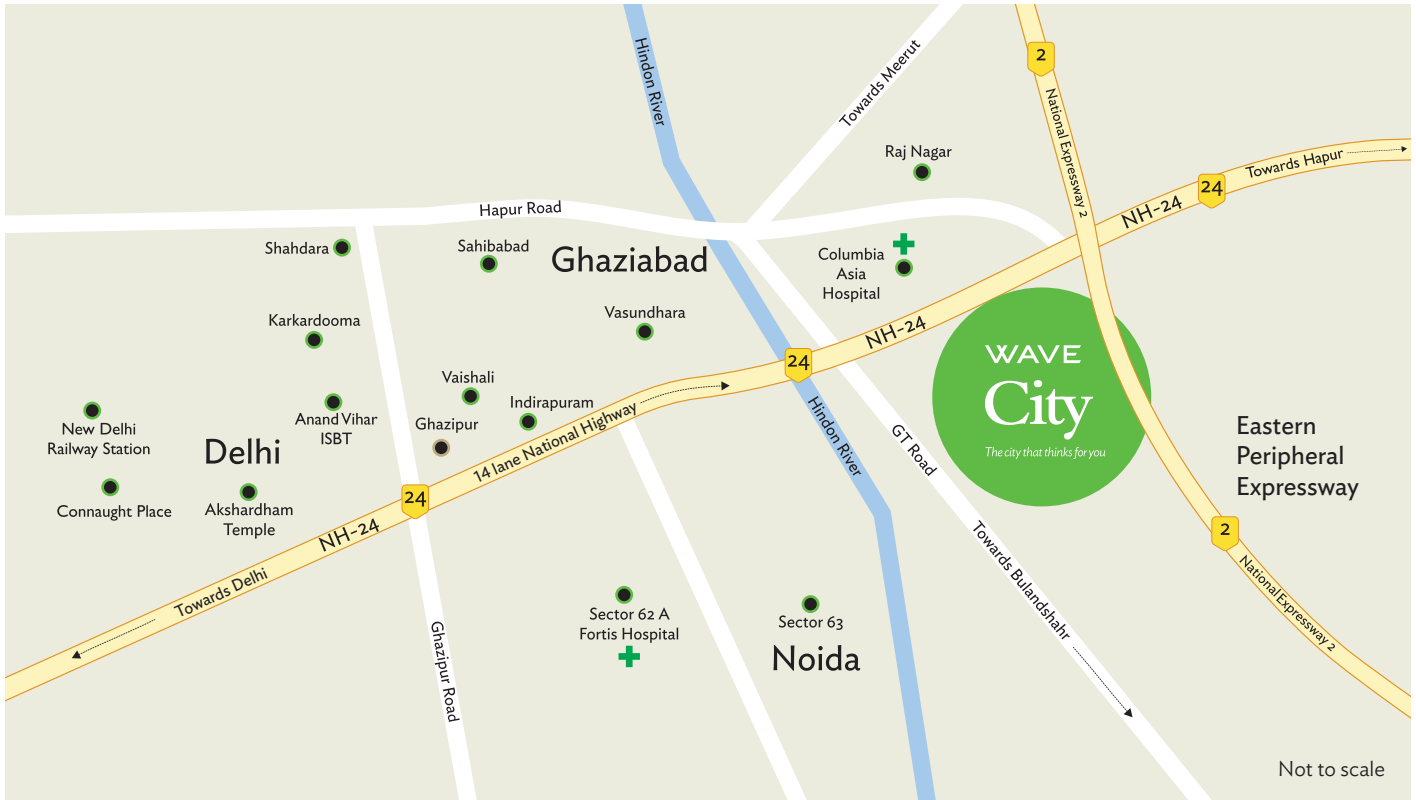
Wave City - Salient Features

- Spread over huge expanse
- Hi-Tech and contemporary features
- Strategically located on NH 24, the newest suburb of Delhi
- Wide array of products: Residential, Plots, Independent Floors, Villas, Group Housing, Commercial, etc.
- Excellent intra-city road network for congestion free and smooth traffic
- Large green spaces spread across the city
- Educational institutes, Health, Sports facilities, etc. within the city
- Neighbourhood facilities & amenities
- GPS Enabled Intra-city transport facility

SMART FEATURES



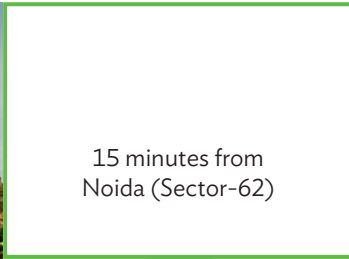
Wave City Smart Location



Location advantages



30 minutes from Akshardham Temple



15 minutes from Noida (Sector-62)



10 minutes from 8 lane Delhi - Meerut Expressway



5 minutes from the nearest proposed Metro Station



Consultants

Master Planning, Landscape & Infrastructure Development

AECOM

IGBC Pre-certified Platinum Rated Township



Marketed By



IGBC Pre-certified Platinum Rated Green Township.

Wave Executive Floors, Wave City, NH 24, Newest Suburb of Delhi

Project Location: Wave Executive Floors, Greenwood Enclave, Wave City, NH

Contact Us: 921 222 4545