



The image features two modern lamps against a dark, textured background. The lamp on the left has a gold-colored shade and a base with a black and white marble pattern. The lamp on the right has a solid black shade and a gold-colored base. The text 'LOW-RISE. HIGH LIVING.' is positioned to the right of the lamps.

LOW-RISE.  
HIGH LIVING.



  
VERIDIA  
LOW-RISE UBER RESIDENCES

OAKWOOD ENCLAVE, WAVE CITY

## LOW-RISE UBER RESIDENCES

Prepare to experience the next level in luxury lifestyle. At Verda, extravagance adorns by sprawling lush green divides luxury, maximizes you and makes you catch your breath every time you look. The houses have boast all the modern luxuries you've ever dreamed of and more. With state-of-the-art amenities for ultimate comfort, each home is designed to be a reflection of your grand status.



## THE LUXURY OF VERIDIA

- Expansive 1-BHK Skyllas & 4-BHK Floors • Gated Community • 3-Tier Security
- Low-Density Development • Exclusive Terrace with Skyllas • Luxurious Clubhouse
- Vast Open & Green Spaces • 2 Units to a Floor



## SUCCESSFUL COLLABORATIONS STUNNING ARCHITECTURE



A multi-disciplinary firm founded by architect and urban planner, Felino "Jun" A. Palatox Jr., in 1989, Palatox Architecture has carried out more than 1,700 projects in 40 countries. The firm's more than 100 full-time staff of professionals and 100 consultants have expertise and experience in various fields of discipline such as architecture, urban planning, environmental planning, urban design, engineering, interior design, economics, real estate, business management, communications management, policy, as well as from specialized fields such as transportation planning, tourism, urban analytics, and climate change assessments, among many others.

Palatox Architecture was the first Filipino firm cited in the Top 100, Top 300, and Top 200 architectural firms and the first Filipino and ASEAN firm in the top 100 cited by the World Architecture Magazine based in London. The firm was the first to be ISO-certified in architecture, urban planning, landscape architecture, and interior design and among the first firms to be ISO-certified in engineering and project management.

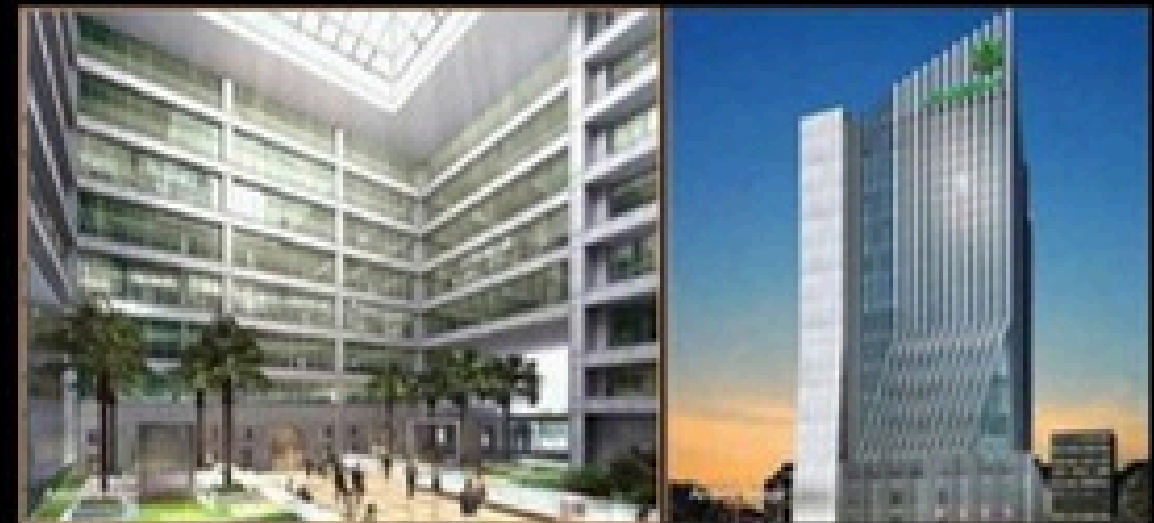
ARCHITECT PARTNER: PALATOX



Railroad Center, Philippines



King Abdullah Financial District, Saudi Arabia



Asian Development Bank, Philippines

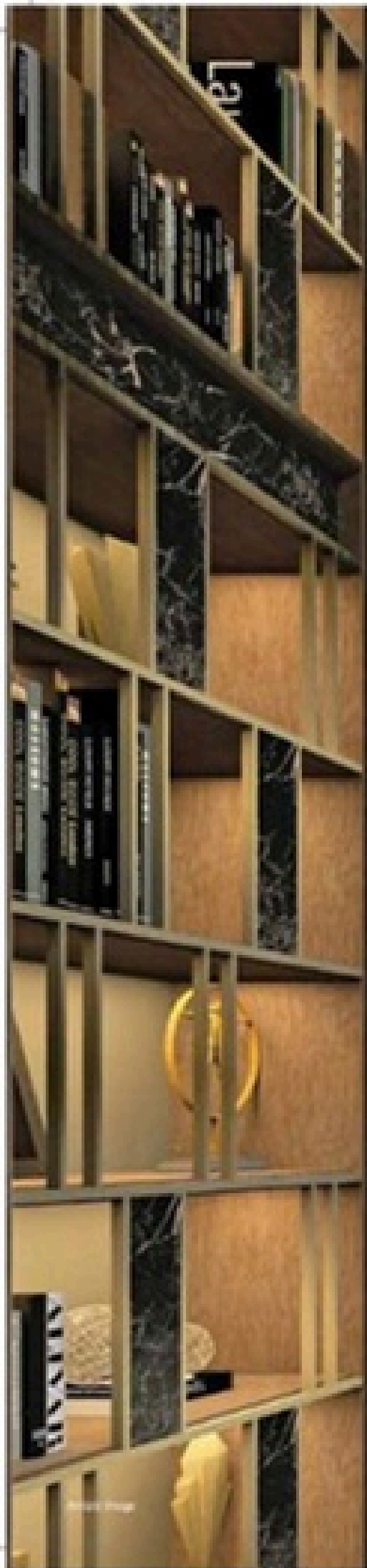
Landmark Cebu Corporate Center, Philippines



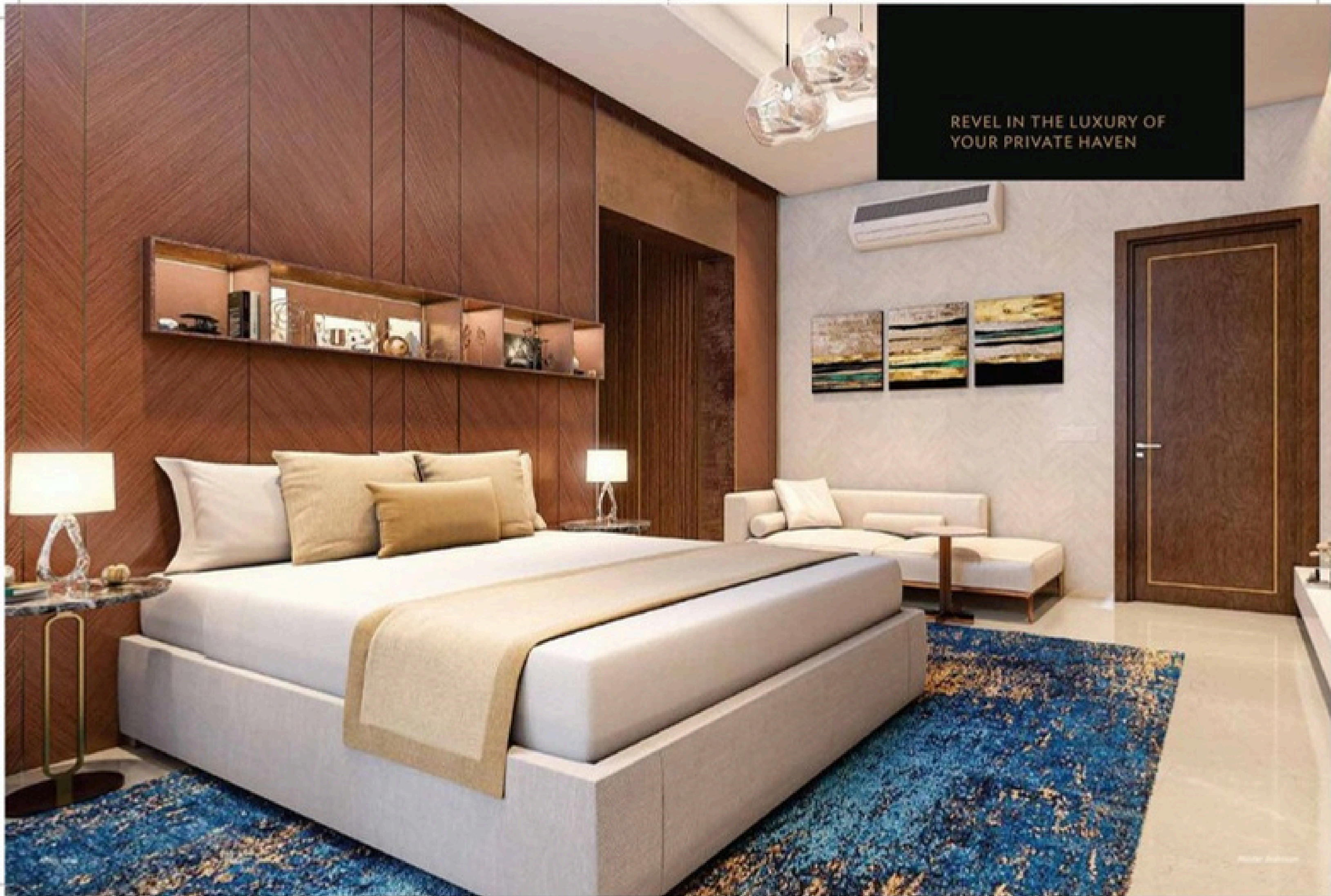
HIGH IN STYLE.  
HIGH IN DESIGN.

## HIGH ON SPACE ULTRA SPACIOUS 5 BHK SKYVILLAS

With a large built-up area, these beautiful duplexes are designed to provide luxurious space and abundant natural light. The high-quality flooring, home automation facilities, modular kitchen and a thoughtful layout gives you the grandness you truly deserve. The 27' double height ceiling makes you feel like you're on top of the world.



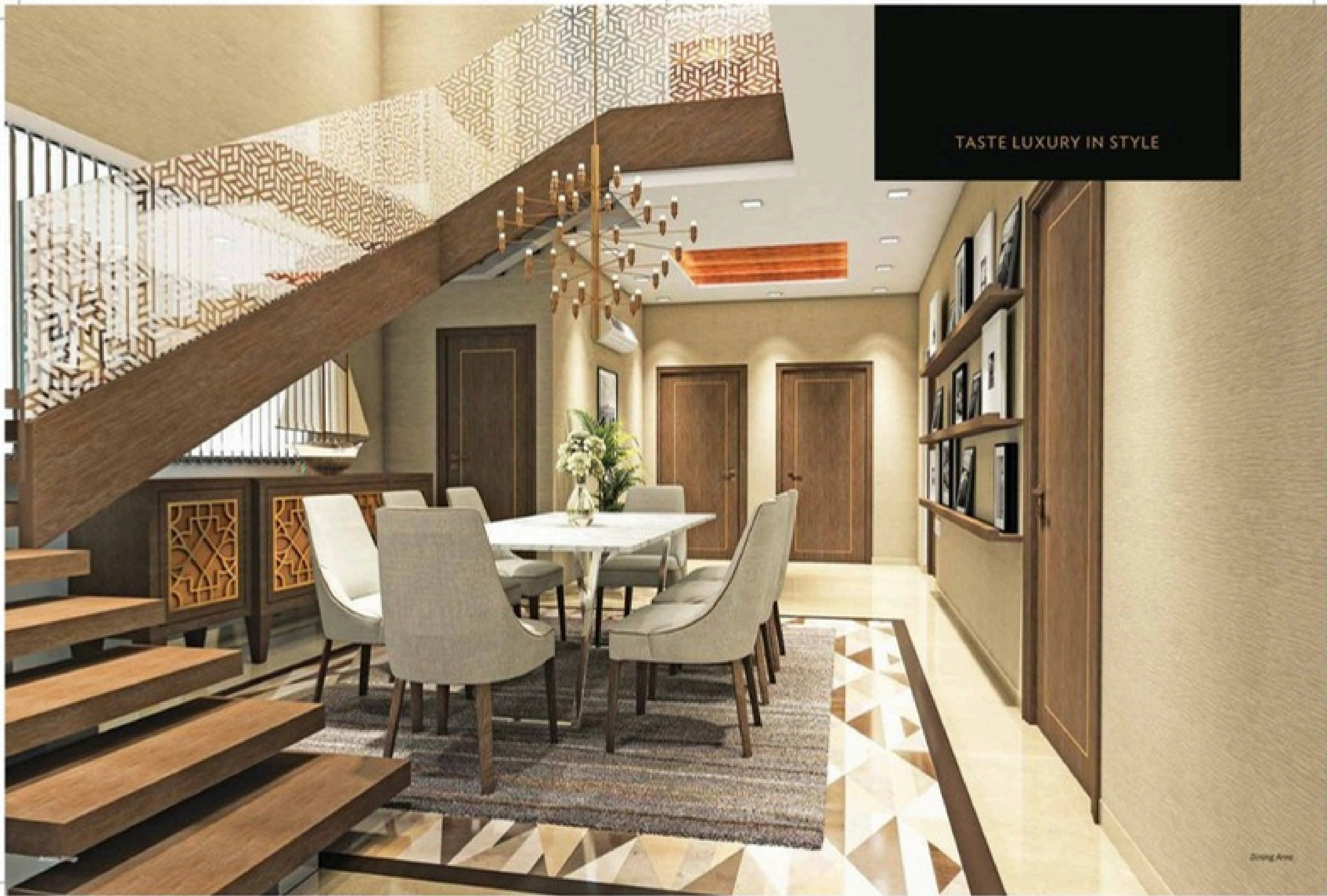
REVEL IN THE LUXURY OF  
YOUR PRIVATE HAVEN



TURN EVERY MOMENT INTO  
A MEMORY TO CHERISH



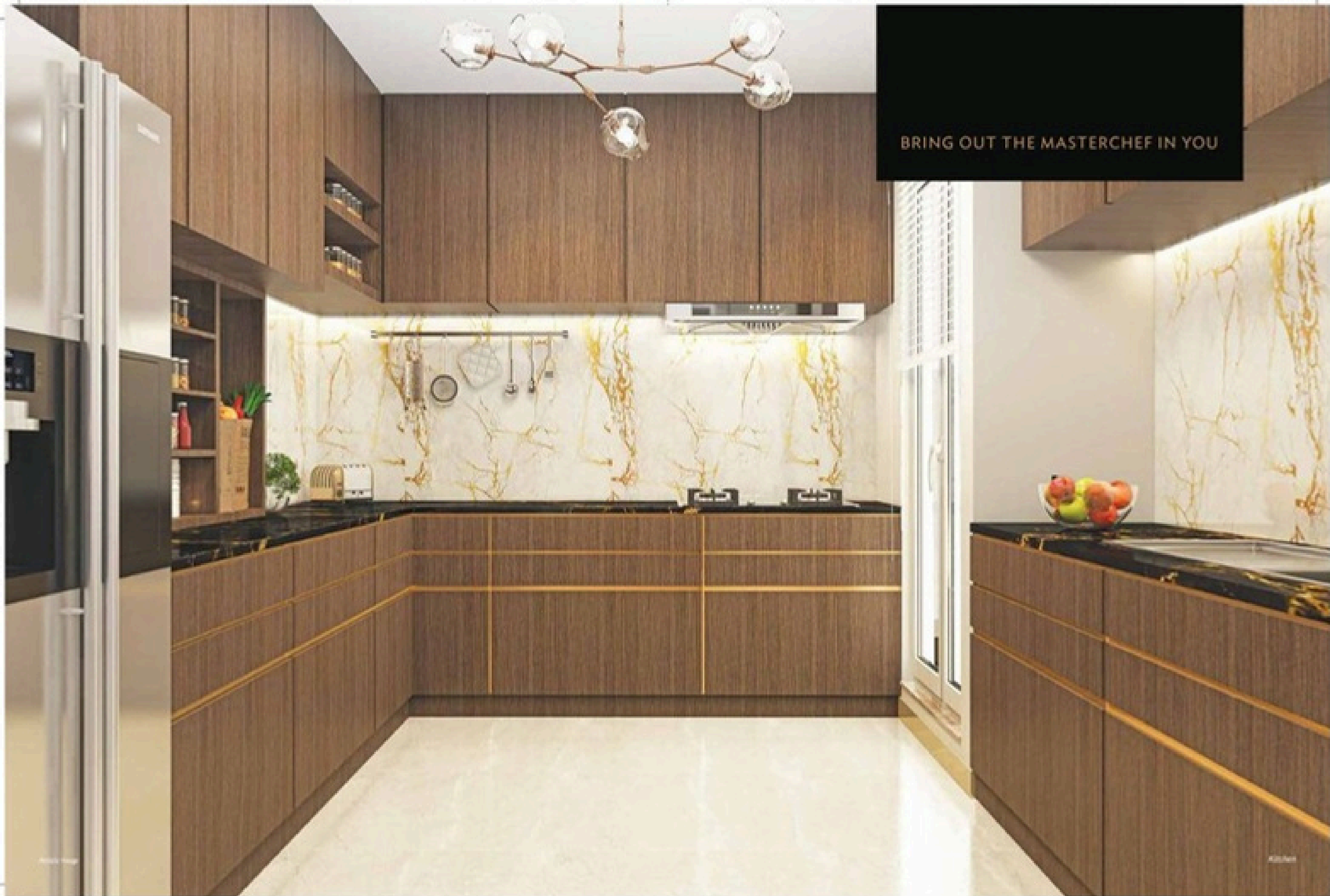
TASTE LUXURY IN STYLE



UNWIND AND IMMERSE  
YOURSELF IN SERENITY



BRING OUT THE MASTERCHEF IN YOU



EMBRACE THE COOL BREEZE  
AND THE WARM SUN



SWIM YOUR WORRIES AWAY

